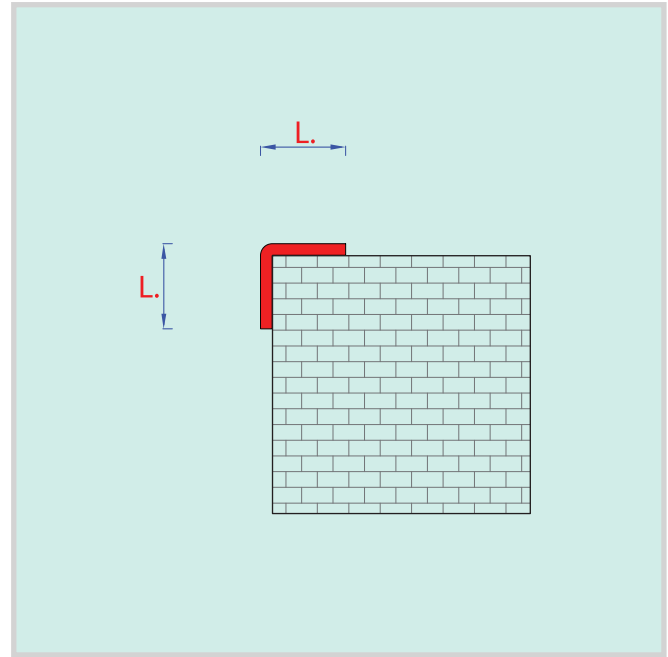
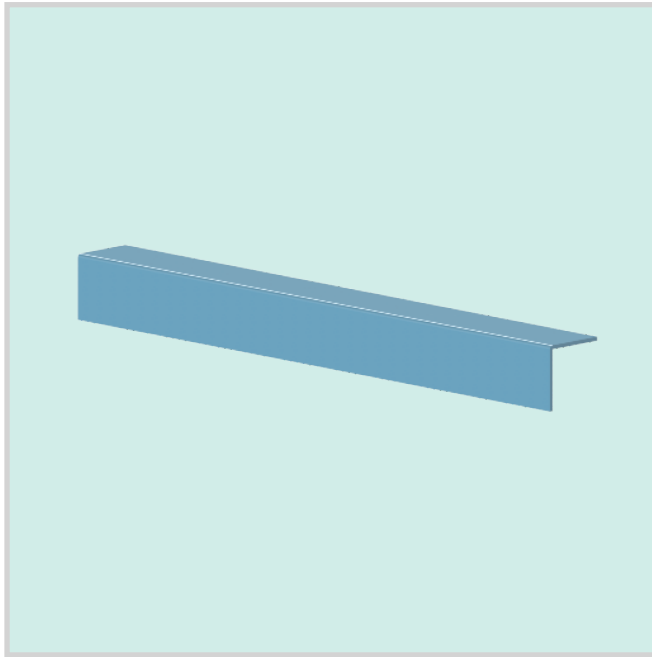


TECHNICAL DATA

S30E

CORNER BUMPER



DESCRIPTION

Corner bumper with side 30 mm.
 made of titanium dioxide polymer th. 2 mm.
 "FINE" embossing for a perfect hygiene.
 Anti pollution, anti bacterial, odorless.
 High shock-resistance and weather chemicals resistance.
 Wall fixing through glue.

LOAD

Shock-resistance 300 kg.

SIZE

Side 30 x 30 mm. - bars of 3 mtl.

COLOR

S0 White - S1 Ivory - S2 Pastel blue - S3 Pastel green - S4 Light grey - S5 Anthracite grey
 S6 Yellow - S7 Blue - S8 Moos green - S9 Silver grey - S10 Pale brown - S11 Traffic black -
 S12 Red - S13 Wild Rose - S14 Salmon

CERTIFICATIONS

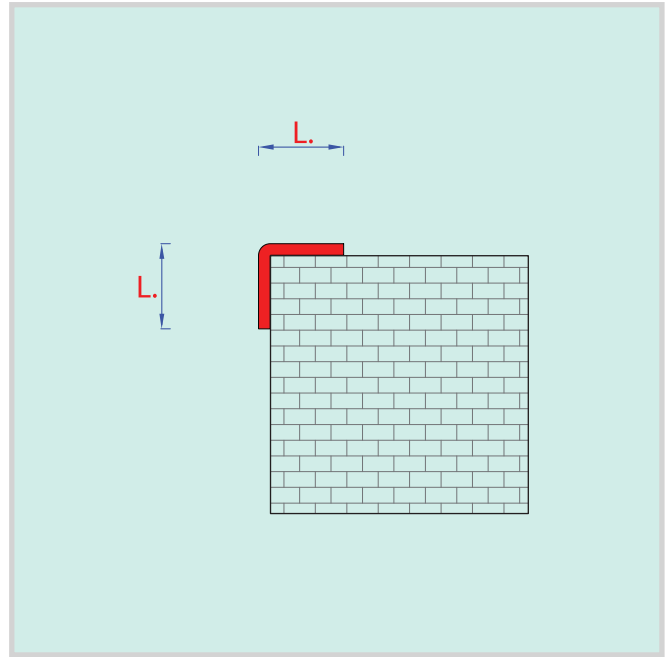
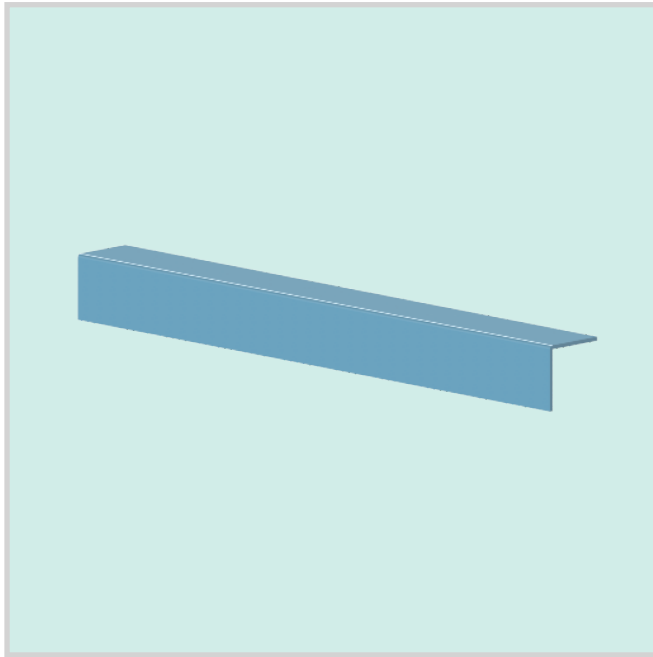
ISO 9001:2015 quality certification issued by TÜV Italia S.r.l.
 Fire safe CE B-s2,d0 certification.
 Absence of bacterial growth certification issued by CSI group IMQ.
 Declaration of quality office about absence of Cadmium and/or heavy metals.
 Declaration of quality office about bio-compatibility and recycling.

MPS reserves the right to modify products without previous advice.

TECHNICAL DATA

S50E

CORNER BUMPER



DESCRIPTION

Corner bumper with side 50 mm.
 made of titanium dioxide polymer th. 2 mm.
 "FINE" embossing for a perfect hygiene.
 Anti pollution, anti bacterial, odorless.
 High shock-resistance and weather chemicals resistance.
 Wall fixing through glue.

LOAD

Shock-resistance 300 kg.

SIZE

Side 50 x 50 mm. - bars of 6 mtl.

COLOR

S0 White - S1 Ivory - S2 Pastel blue - S3 Pastel green - S4 Light grey - S5 Anthracite grey
 S6 Yellow - S7 Blue - S8 Moos green - S9 Silver grey - S10 Pale brown - S11 Traffic black -
 S12 Red - S13 Wild Rose - S14 Salmon

CERTIFICATIONS

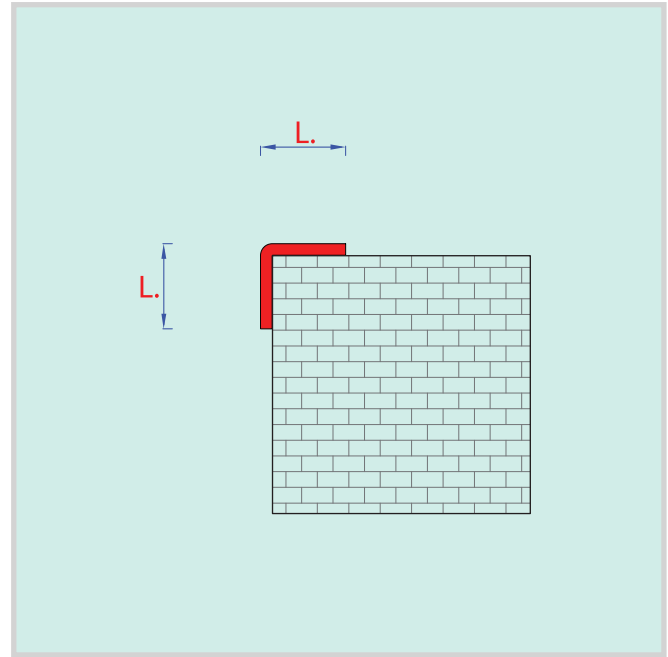
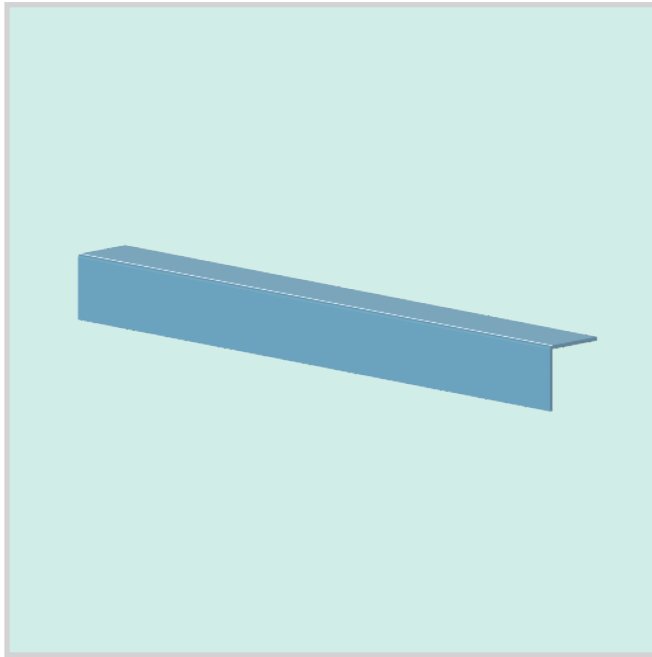
ISO 9001:2015 quality certification issued by TÜV Italia S.r.l.
 Fire safe CE B-s2,d0 certification.
 Absence of bacterial growth certification issued by CSI group IMQ.
 Declaration of quality office about absence of Cadmium and/or heavy metals.
 Declaration of quality office about bio-compatibility and recycling.

MPS reserves the right to modify products without previous advice.

TECHNICAL DATA

S70E

CORNER BUMPER



DESCRIPTION

Corner bumper with side 70 mm.
 made of titanium dioxide polymer th. 2,5 mm.
 "FINE" embossing for a perfect hygiene.
 Anti pollution, anti bacterial, odorless.
 High shock-resistance and weather chemicals resistance.
 Wall fixing through glue.

LOAD

Shock-resistance 300 kg.

SIZE

Side 70 x 70 mm. - bars of 6 mtl.

COLOR

S0 White - S1 Ivory - S2 Pastel blue - S3 Pastel green - S4 Light grey - S5 Anthracite grey
 S6 Yellow - S7 Blue - S8 Moos green - S9 Silver grey - S10 Pale brown - S11 Traffic black -
 S12 Red - S13 Wild Rose - S14 Salmon

CERTIFICATIONS

ISO 9001:2015 quality certification issued by TÜV Italia S.r.l.
 Fire safe CE B-s2,d0 certification.
 Absence of bacterial growth certification issued by CSI group IMQ.
 Declaration of quality office about absence of Cadmium and/or heavy metals.
 Declaration of quality office about bio-compatibility and recycling.

MPS reserves the right to modify products without previous advice.

SE SERIE

	Color	MPS Reference	RAL Reference
	White	S0	9010
	Ivory	S1	1015
	Pastel blu	S2	5024
	Pastel green	S3	6019
	Light grey	S4	7035
	Anthracite grey	S5	7016
	Yellow	S6	1021
	Blue	S7	5001
	Moss green	S8	6005
	Silver grey	S9	7001
	Pale brown	S10	8025
	Traffic black (*if order)	S11	9017
	Red	S12	3003
	Wild Rose	S13	
	Salmon	S14	3022

The ral colors references in the a.m. table are indicative and not binding as a plastic material and are subject to variation of 0.5%
They can be modified at any time for production reasons and market needs

The representation of the reported RAL colors is to be considered approximate, caused by the difference of the representation on the screen.
For an exact re-production of colors we suggest to refer to an original RAL color chart